



Presbyterian
Support

Otago



Spring 2017

OUTSTANDING COMMUNITY SUPPORT AT OCTACAN



It was the 22nd day of June and the 9th annual Octacan event was stirring. As the rising of the sun marked a new day, the initiation of can collecting for the foodbank began.

The sodden, frost-kissed ground was brightened by outlined hearts of colourful chalk. Each heart marked the placement of differently themed cans, such as vegetables, fruit, spaghetti, and even baby food.

Over the course of the day, these hearts were steadily filled and stocked with donated items; invoking an appropriate metaphor for the steady swelling of hearts at such a generous community.



The first cans were placed at 7:30am by four young school students, braving the morning darkness to make their contributions. As the sun dragged itself across the sky, more and more people offered their own canned contributions to the cause.

Many schools were involved in the collection. Students from Kings High School and Otago Girls' High School expressed excitement at the opportunity for "young people to give back to the community". They were proud of their respective schools for taking the initiative to hold fundraisers and donation events.

Amongst the many businesses who called by, our local Police made an appearance at the event, as two officers arrived with their own inventory of cans. One officer laughingly told of a "great operation" to raid the cupboards of their colleagues for unwanted cans. Their cupboards must have been deep indeed, to produce such a worthy haul!

"The need is great and I'm aware that these cans won't last too long in the foodbank. The work that Presbyterian Support does is truly amazing," said Councillor Damian Newell when he dropped by, with cans in hand.

Fundraising Coordinator Jasmin Graham was impressed: "Octacan is one of the most important events held by Presbyterian Support Otago each year, and we know that Octacan has truly become a community event."

This year we were supported by Storage King South Dunedin and Better Moves, who assisted us to transport thousands of cans from the Octacan to our storage space in record time, among other things.

The Family Works foodbank distributes over 4,000 emergency food parcels each year. Each parcel includes tinned, packaged, and perishable food items.

The final count of donated items at Octacan's conclusion was 22,172.

This record breaking figure was reached after over 80 school groups, community organisations, and businesses, in addition to hundreds of members of the public came to the Octagon and donated cans.

Thank you to everyone who supported Octacan 2017!

CHILDRENS' CREATIVITY ON DISPLAY

Dunedin was host to a national art and writing competition in July, thematically inspired by Mother Teresa's charitable sentiments.

'Doing small things with great love' was this year's theme for the 'Love Reaches Out' creative initiative; encouraging an exploration of how we can show love to others. Previous years had similar topics, including 'Caring for our World' (2014) and 'Love in Action' (2016).

Children between kindergarten age and Year 8 were invited to submit artistic interpretations or representations of the theme. The entries came in a range of formats: painting, sketching, sculpture, poetry, and short stories.

"We know many kids have very creative ideas," said Carolyn Sims, Community Mission Coordinator and competition facilitator, "so we encouraged them to get creative, and it's been great to see what has been submitted. We were thrilled to have over 150 entries sent in to us."

The competition was a perfect activity for a number of Buddy Programme pairs and other interested children who came together to discuss and create art on Saturday, 8 July. The day was a wonderful opportunity for fun and vibrancy!

All of the submitted works were part of a public exhibition on display at Knox Presbyterian Church in Dunedin, held during August.

Love Reaches Out is a joint annual activity coordinated by Presbyterian Support's Family Works service, the Presbyterian Church of Aotearoa, Kids Friendly and Presbyterian Savings and Development Society.

Congratulations to all of the children who participated in this competition.



Children create their 'Love Reaches Out' entries

SECOND HAND ITEMS CAN DO GOOD



Spring is here, and the change in season may give you reason to do some spring cleaning.

We want to make it easy for anyone to donate suitable unwanted goods to us, so we've launched an initiative called 'Pack it up, Pass it on'.

It's easy to participate. Visit our website (psotago.org.nz) to order donation bags, find the nearest location to drop donations off, or to arrange for a bulk donation to be collected (within Dunedin city).

All donations that we receive are passed on to families in need, or sold through

one of our three charity shops. The profits from the shops go directly back into supporting our community work.

If you don't live in Dunedin and would like to donate items, you're welcome to order collection bags from the website. You can drop full bags off at your nearest Enliven home, and we will arrange it from there.

Please encourage anyone you know who has unwanted items to consider donating to us.

This People magazine was compiled with assistance from Dunedin student volunteers. Jack Sharp wrote several of the articles, and the layout was put together by Kathleen Riach. Our sincere thanks to these two wonderful students.

MOST TRUSTED AGED CARE PROVIDER IN NEW ZEALAND

Presbyterian Support's Enliven service was named New Zealand's Most Trusted Aged Care and Retirement Villages Brand for 2017.

The accolade comes from the independent, commissioned 2017 Reader's Digest Most Trusted Brand Survey.

Respondents highlighted our not-for-profit values, genuine care, honesty, high quality aged care, and retirement services, and support.

Gillian Bremner, Chief Executive, says the win is recognition that the organisation's values and not-for-profit philosophy drives the service delivery.

"We're about people first and foremost. We design, develop, and operate quality care homes, retirement villages, and community support services; with care at the heart of all we do."

"We focus on creating communities where older people have companionship, variety, fun, a sense of belonging, meaningful activity, and purpose in their lives."

David Richardson, Presbyterian Support Otago Chairman, says the recognition was credit to our dedicated, passionate, and caring staff.

"Trust is absolutely crucial in aged care. The support that Enliven staff provide to older people is outstanding. It's not just knowing and understanding health requirements, it's truly knowing and understanding the residents and clients, and developing strong relationships with them and their family."



Mrs Bremner says Presbyterian Support's long history of providing support for communities also contributes to the high level of trust.

"Presbyterian Support Otago has been supporting people and communities nationwide for more than 110 years."

"Trust is not something that we'd ever take for granted, and an award like this certainly means that, as an organisation, we are providing services to a consistently high standard."

Our thanks, and congratulations, to everyone who continues to make Enliven a national treasure.

SUPPORT US WHEN YOU SHOP

Did you know you can actively support our Family Works team every time you pass through the checkout of your local Warehouse?

When you shop at The Warehouse in South Dunedin, Oamaru, Balclutha or Alexandra you will receive a cardboard token with your purchase. Simply drop the token into the Family Works slot in the red Customer Choice Bins to let The Warehouse know you'd like them to support the work we do.

At The Warehouse in South Dunedin, your token can support the Family Works foodbank. The foodbank in Dunedin handed out over 4,000

emergency food parcels to those in desperate circumstances in the last 12 months. It means families don't go hungry when times are lean.

Shop at The Warehouse in Oamaru, Balclutha and Alexandra and your token can support the Family Works Buddy Programme. The Buddy Programme sets up connections between adult and child buddies, so that children can benefit from sharing one to two hours a week of recreation time with a trusted adult.

"We really appreciate the support that people give our programmes in a number of ways," says Family Works Director Paul Hooper.

"Choosing to support our Family Works activities with your tokens when you shop at The Warehouse is an easy way to show your support for us."

Six cents per token is donated to the nominated cause, so please spread the word. Every token makes a difference!



45 YEARS OF CARE

One of the many friendly faces you are likely to meet at Iona Enliven Care Home in Oamaru, is Noel Bean.



Noel Bean assists an Iona resident with walking exercises

Noel is being recognised for 45 years of service with Presbyterian Support Otago this month – a significant achievement that is worth celebrating.

Noel was born and raised in the district and she recalls her introduction to Iona when they were looking for weekend caregivers.

She worked eight hours each day in the weekend, and was initially paid less than \$1 per hour.

“The role involved lots of physical and hands-on work with the residents, and there wasn’t very much paperwork required back then”, she recalls.

After 31 years assisting residents as a caregiver, Noel stepped back for a few months because of personal health challenges. As soon as she was able to return to work at Iona, she did.

Noel worked in housekeeping, before she became a physio assistant. She is still doing this role two afternoons each week, and enjoys interacting with residents.

Being part of the team at Iona is something of a family affair. Noel’s husband was involved in building the ‘Kirkness’ area, her daughter worked in the dining rooms when she was a student and her son is a plumber who has done work at Iona over the years.

“We have a wonderful team at Iona, with fantastic people like Noel. While a number of people have been here for some time, the 45 years of service that Noel has given is simply incredible.”

Iona Manager, Steph Leigh

Noel has never considered working anywhere else, “Iona has always had a great family atmosphere and I love all the people that I work with here.”

Thank you, Noel, for the wonderful work you do as part of the Iona family.

WEDDING BELLS AT SHOP ON CARROLL

From Monday 18 September Dunedin’s Shop on Carroll will be transformed as wedding fever takes over for the month.

Wedding dresses, stories and photos will be on display. Over 30 wedding dresses and a range of bridal and bridesmaid accessories will also be available for sale in Shop on Carroll. The oldest of these gowns is a 1920s dress, made with lace and satin.

One of the wedding dresses that people will see in the shop window (pictured) was worn by Linda Wheeler when she got married on a snowy winter’s day at East Taieri Church in 1967. Her father was well-known local icon Joe Brown and her wedding dress was purchased by her parents on a trip to Australia.

Fiona Dodds, Shop on Carroll Manager, said, “At Shop on Carroll we enjoy celebrations that people can connect with. We’ve heard some really fantastic stories as we prepare for our wedding celebrations and are looking forward to sharing so many exquisite dresses with our customers.”

Call into Shop on Carroll, at 10 Carroll St, to experience the wedding expo from 18 September until 14 October.

Shop on Carroll is open Monday to Friday 10am – 5pm and Saturday 10.30am – 3.30pm.



CONNECTING WITH THE COMMUNITY FOR 99 YEARS

Ross Home, home to 124 residents in north Dunedin, is our oldest care home and is counting down to celebrating their centenary in October 2018.

Margaret Pearce, Ross Home Manager, is very proud of the role that Ross Home plays in North East Valley, after being part of the community for 99 years.

“We’ve always been well connected to the community with various local school and groups coming into the home. I’m particularly pleased with the many medical students that spend time with us at Ross Home to gain experience every year. In the last 24 months, around 240 students have been part of the team here.”

A highlight for Margaret was the establishment of the Competency Assessment Programme, set up 16 years ago with support from Vicki Yarker-Jones. It was a joint initiative between Ross Home and the Otago Polytechnic, with oversight from the Nurses Council.

The idea was to give nurses who came from overseas, or who had not been working in the area for over 10 years, the opportunity to test their skills as

they entered (or re-entered) the New Zealand workforce. A few years after it was established, the programme was fully taken over by the local Polytech, and it has since been rolled-out nationally. Students completing the programme continue to come to Ross Home every year, with a number joining Ross Home in permanent roles.

Ross Home hosts a mothers group each week, and local school groups can always be found in the home, often working on practical projects such as designing and planting gardens for the residents.

Residents have regularly headed out from Ross Home to participate in community activities. The Valley and Hill Games are an example of an annual event where Ross Home and Little Sisters of the Poor Home and Hospital engage in friendly competition.

When Opera-tunity travels to Mosgiel several times each year you’ll always find a group from Ross Home in the audience. Margaret confirms that they haven’t missed attending a single Opera-tunity show.

We look forward to sharing more memories from Ross Home in coming editions of *People*, as we prepare to celebrate their 100th birthday in October 2018.



NEW LOOK AT YOUTHGROW

Despite rain, snow, frost and cold over the winter season, the YouthGrow team has been busy weeding, pruning, re-potting, raking, sweeping, cleaning and rearranging plants.

The team have completed a total renovation of the outside area and have plenty of plants that are ready to make the move into the Garden Centre, just in time for spring.

Stephen Dewdney, from the YouthGrow team, said, “Anyone in Dunedin or visiting the city is very welcome to call in and see the changes we have made. We recommend that you look out for some of the quirky surprises we have set up in the garden centre.”

“And while you visit us make sure you buy lots of plants, because all sales help us to assist the youth in our region.”

YouthGrow is open 7 days a week, 10am – 4.30pm, and grows plants onsite to suit Otago weather conditions. They are located at 146 Norwood St, North East Valley, Dunedin. You can also buy plants from YouthGrow each Saturday morning at the Farmers Market, outside the Dunedin Railway Station.



AGM

Presbyterian Support Otago’s Annual General Meeting for the 2016-17 year will be held at 5.30pm on Tuesday 24 October 2017 at Burns Hall, First Church, Moray Place Dunedin. Everyone is welcome.

COMMUNITY GENEROSITY HAS PLENTY OF PUFF IN WANAKA

Enliven staff in Wanaka decided to organise a fundraiser to buy a portable oxygen concentrator to share between Elmslie House and Aspiring Enliven Care Centre.

Thanks to a generous community response, over \$12,000 has been raised, which means both facilities now have their own portable oxygen machine. As a bonus, there are still funds left over to spend on other equipment to enhance the lives of residents.

As soon as staff announced they would hold a quiz night, people started making donations. The family of a resident of Aspiring Enliven contributed \$1,000 and some large donations came in from local businesses.

Upper Clutha Hospice Trust contacted Aspiring Enliven Manager Jacqui Boylen, offering to pay for the second machine. Each oxygen concentrator cost \$4,600.

A crowd of 120 people turned up for the fundraiser, and they were kept entertained by Wanaka Quiz supremo George Smyth. A number of items, donated by local businesses, were auctioned off and used for the raffle.

Jacqui said, "These machines will make a significant difference because they are

portable. This means residents can go out shopping or on longer journeys with their families."

Staff were thrilled to see the portable oxygen concentrators turn up a week after the fundraiser. They are now deciding what other equipment to purchase for the homes.



Kim Taylor (left) and Jacqui Boylen with the first portable oxygen concentrator

PSO TO FAREWELL CHIEF EXECUTIVE

Chief Executive, Gillian Bremner, has announced her intention to retire early next year.



It has been more than 23 years since Presbyterian Support Otago has farewelled a Chief Executive.

David Richardson, Presbyterian Support Otago chairman, explains, "Gillian has led our organisation with great faith, compassion, respect, integrity, and courage, and I am grateful for her enormous contribution to both PSO and the greater Otago community."

"Gillian's reasons for leaving are family and opportunity based, with her husband, Graeme, taking up an academic position in Botswana."

Gillian said, "times, circumstances and individuals change, but the need never goes away. This has certainly been true throughout our 111 year history.

Whatever the future may bring, this is an organisation that can meet any challenge."

"There have been many highlights for me. One has been the broadening of our approach to include advocacy, giving voice to the clients we serve and the issues they face. Another has been the work we have been able to do with strengthening communities."

"I am proud of what we have been able to do in residential aged care. The focus on quality of care tailored to the individual, and the capital development over the years, has been very satisfying."

Over the coming months there will be opportunities to acknowledge and farewell Gillian.

SPRING INTO SUPPORT

There are plenty of ways to support the work we do, and your generous financial contributions makes a difference to families and children across Otago every single day.

In this edition of *People* we've shared stories about some of the many ways that we continue to receive generous support from the community.

Can donations, donations of unwanted second hand goods and clothing, generous support with local fundraising activity, and selecting us when you shop at The Warehouse are all very appreciated. You can also support us with a financial donation.

It is important to us that anyone can walk in our doors and know that they will find the comfort and support they need.

Our Family Works team continues to see a sustained level of requests for support, as households find their budgets are stretched. While the winter months are almost behind us, the challenges many families and individuals face will continue throughout the year.

In the last year, we gave out over 4,000 food parcels, and our Family Works programmes supported over 10,000 people across the region.

When you give a financial donation to support the work we do you're helping others. Did you know...

\$20 provides a food parcel to feed a family for a day

\$50 supports a Young Buddy to have ongoing mentoring with their Adult Buddy

\$100 enables parents to complete a parenting course with us

\$150 allows us to support someone with emergency housing overnight

Every donation makes a difference for someone in need.



This spring, please help us to support your community.

Complete the form and return it to us with your donation, or go online to get involved and make your donation at psotago.org.nz



YES! I WANT TO HELP THIS SPRING

Please tick how you wish to support us

- \$20** feed a family for a day
- \$50** support a Young Buddy with mentoring
- \$100** enable parents to complete a parenting course
- \$150** support emergency housing
- Other \$
- I have left a gift to PSO in my will
- I would like more information about leaving a gift in my will
- I will like more information about making a regular donation
- Please tick payment method
Cheque Credit Card
Internet Banking
-  

Card number

Name on card

Expiry date

Signature

Internet Banking PSO Account Number:
06 0901 0005597 00

My contact details are

Name

Address

Phone

Email

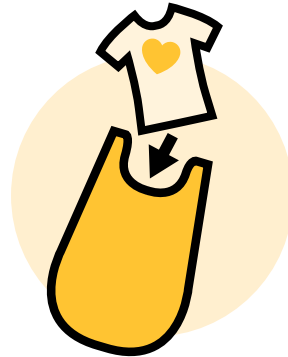
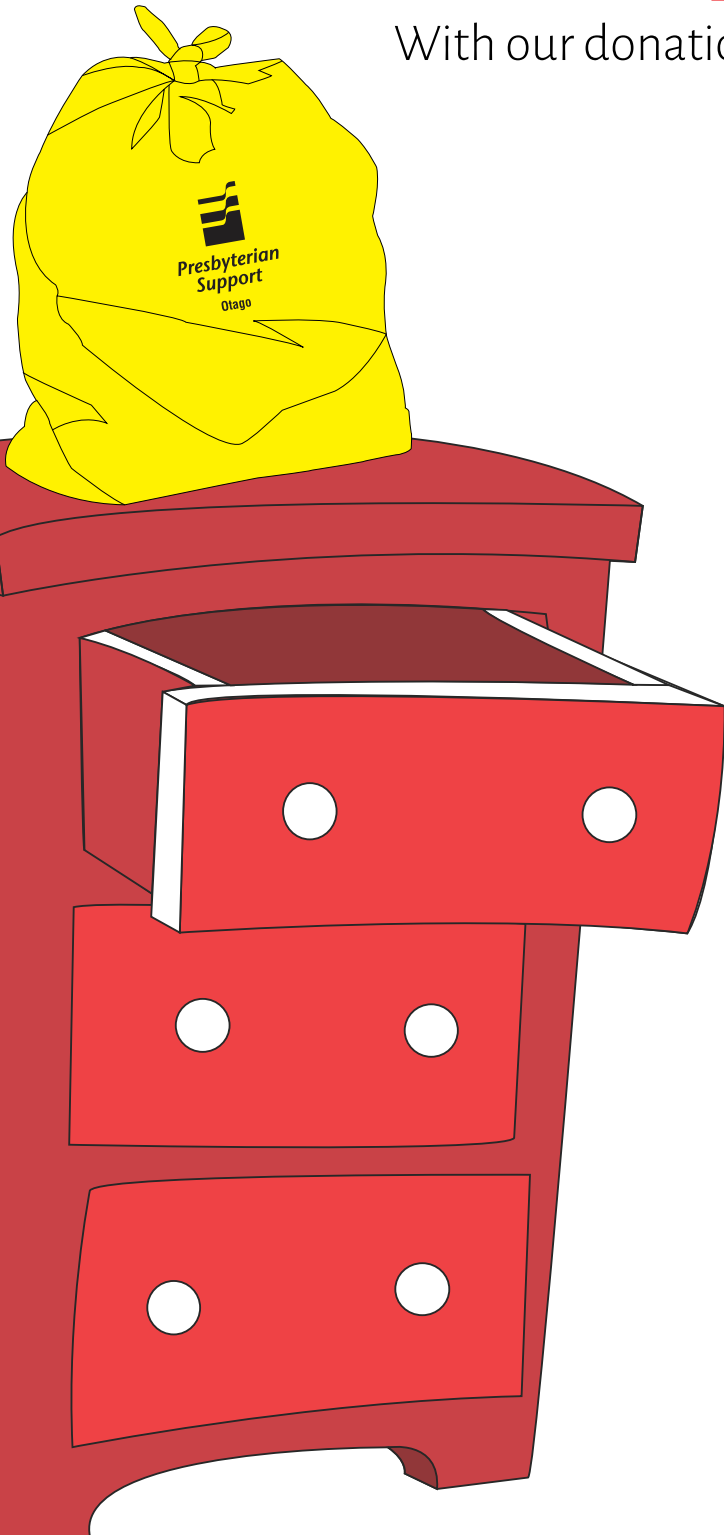
Please return this form to:

Fundraising Team
Presbyterian Support Otago
FREEPOST 845
PO Box 374, Dunedin 9054

(All donations are receipted. Gifts over \$5.00 are tax deductible. Charities Commission number CC 20878)

Pack it up, Pass it on

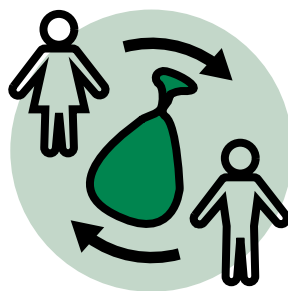
With our donation bags it's easy to do



Order donation bags from www.psotago.org.nz or phone **03 477 7115**.



Drop your donation at one of our nine locations, or call to arrange collection.



We will pass on your preloved goods to families in need, or sell them at one of our three charity shops.

100% of your donations support the Otago community



Presbyterian
Support Otago
407 Moray Place
PO Box 374,
Dunedin 9054

t: 03 477 7115
e: enquiries@psotago.org.nz
w: psotago.org.nz
f [PresbyterianSupportOtago](https://www.facebook.com/PresbyterianSupportOtago)
v [PSOtago](https://www.youtube.com/channel/UCPSOtago) [PSOtago](https://www.instagram.com/PSOtago)

