



ANNIVERSARY EDITION 2016

110 YEARS OF CARE FOR OTAGO'S CHILDREN & FAMILIES IN NEED

IN THIS SPECIAL 110TH ANNIVERSARY EDITION WE SHARE WITH YOU STORIES FROM THE PAST, EXPLORING OUR HISTORY AND THE PEOPLE WHO MADE IT.

We have been supporting Otago's children and families since 1906. Whilst our approach has changed over time, our motivation has not. Otago can be the best place to raise a child, with the right community support.

In the early years, orphanages and residential care for children in need were the norm. From 1907 to the late 1980s Presbyterian Support Otago managed residential care homes and cottages for children. The children in our care were from impoverished backgrounds, had lost one or both parents, or found themselves alone in the world for other reasons.

There are some happy stories from those days and some terribly sad ones too. One can't help but be moved by the description of the first three children taken into permanent care by Deaconesses Mary McQueen and Evelyn Macadam in October 1906: *'found huddled together with their mother who was dying of consumption.'**

Other recollections from that time include this happy memory from Valmai Northcoat, a former resident of Grants Braes Home:

*"There seemed to be a lot of laughter and that about the place... There must have been a lot of games and things going on. ... I loved the kitchen, for some reason or other, I must've spent a lot of time in that kitchen... I was probably sneaking little bits and pieces..."**

From the 1950s public discussion around how to best care for vulnerable children began to include alternative models such as foster care and

more support for parents and families. Social Work developed as a professional occupation requiring training and specialist skills. These developments changed the way Presbyterian Support Otago worked and the services we offered. The importance of community, volunteers and donors grew as we sought to help children and families remain connected.

CONTINUED OVER PAGE >

AGM

Presbyterian Support
Otago's Annual General
Meeting for the 2015-16 year
will be held at 5.30pm on
Tuesday 25 October 2016 at
Burns Hall, First Church,
Moray Place Dunedin.
Everyone is welcome.

VOLUNTEER ACHIEVEMENT AWARDS

Congratulations to Suzanne Inkster (Oamaru), Huia Ockwell (Mosgiel) and Dawn Courtney (Alexandra) on achieving a remarkable 35 years of volunteer service at the recent PSO Achievement Awards. Thank you for your commitment to service.

ASPIRING ENLIVEN CARE CENTRE OPENING

On 3 October 2016 we will welcome the first residents to the Aspiring Enliven Care Centre in Wanaka. 40 people will move in to the new centre offering rest home, dementia and hospital level care. Together with Elmslie House and Ranui, Aspiring Enliven will help us meet the growing demand for residential aged care in Central Otago.

> 110 YEARS OF CARE CONTINUED

In 1963 Presbyterian Support Otago appointed our first qualified social worker, one of only two in Dunedin at the time. This was the beginning of a new approach and the foundation for what would become Family Works, our social services division.

During that time Presbyterian Support began winding down our children's homes and selling the properties. Proceeds from sales helped support children still in our care and were placed in trust to fund new programmes and future social work.

A prudent move as demand for our social services grew sharply in the 1980s. Group training courses for children, parents and teenagers became a focus, allowing social workers and trained facilitators to support larger numbers of clients. The focus of these groups, was, and still is, sharing knowledge, building relationships, developing resilience and keeping families together. Over time, the relationships participants build with each other have proven to be a significant benefit of group courses.

The truth in the old adage "it takes a village to raise a child" is highlighted in the role of community and volunteers in one of Presbyterian Support's most successful and enduring programmes for children, the Buddy Programme. This programme relies on a veritable army of trained community

volunteers. Established in 1989, the Buddy Programme pairs a child in need with a caring volunteer adult for one-on-one time, friendship, fun and encouragement. The programme is currently helping 200 Otago children every year.

The most recent evaluation of the programme reports: *"The young buddies spoke admiringly of their adult buddies, looking up to them with respect, and for guidance. Through the interactions with their adult buddies, many of the young people in the programme felt the adult buddies had positively influenced their lives."*

Unfortunately, children and families in Otago continue to experience poverty and hardship. Today, more than one in four children in New Zealand live in poverty.*** The need for community support to help children and families has not diminished over time.

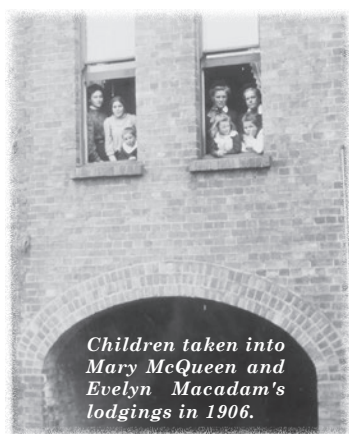
How we support and care for Otago children and families in need will continue to develop and change. Why we care remains the same. With you, we are working for a fair, just and caring Otago community, where children and families feel safe, strong and connected.

* "Making a Difference, a Centennial History of Presbyterian Support Otago", 2006

** "Buddy Programme Evaluation", Family Works 2015

*** "Child Poverty Monitor" Technical Report, 2015.

1906



Children taken into Mary McQueen and Evelyn Macadam's lodgings in 1906.

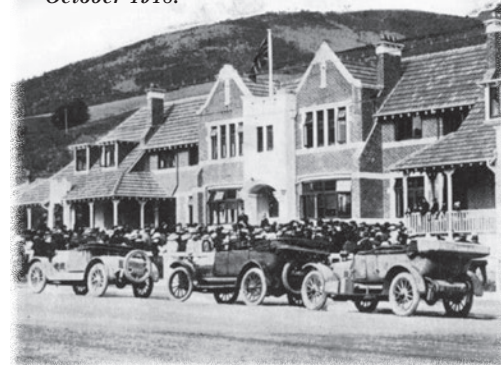


Church Deaconesses Mary McQueen and Evelyn Macadam took in children to live with them in their George street flat. This began our work in residential care for children. The children's homes were quickly expanded and continued until the 1990s.

1918 Ross Home opens in North East Valley.

1916

The official opening of Ross Home in October 1918.



FOODBANK: TAKING CARE — OF THE BASICS —

Hares, eggs, honey, fruit and vegetables were donated to our children's homes in Dunedin from the day they opened.

In the 1940s, parishes held egg appeals that brought in up to 2200 dozen eggs annually, while church harvest festivals contributed fresh fruit and vegetables on a regular basis.

The need to provide children and families with food has continued over the decades.

Government policy and benefit changes in the late 1980s and early 1990s saw increasing demand for basic assistance with emergency

food parcels. We could no longer rely solely on parish volunteers to distribute donated food and so the concept of a foodbank developed. Food producers, supermarkets and the wider community got on board to support the new foodbank. There was also close cooperation between charities such as Anglican Family Care and The Salvation Army to help ensure foodbank services reached those who needed them.

Over the years, the foodbank concept has proven to be a useful means of reaching out to people in need. In the early 1990s the majority of foodbank visitors came only once (60%). Today, two-thirds of visitors also access additional Family Works services

such as: assistance with budgeting, navigating the welfare system, family support, counselling and advocacy. These services aim to help families build on their strengths and prevent dependency on the foodbank.

Presbyterian Support Otago relies on two major annual food collection drives – Octacan in June and the Christmas appeal in December. These two events, together with the ongoing support of individual and organisational donors, help us meet people's basic need for food, and reach out to support families in crisis.

The Family Works foodbank in Dunedin distributes approximately 3,200 food parcels annually.



A 1996 potato harvest in Weston for our foodbank. From left, scout Alan Birtles, scout leader Gary Rzepecky, farmer Neil Harvey, Presbyterian Support Director of Child and Family Services Ian Robertson, and scouts Andrew Beachamp and Roderick Rzepecky.



The 2016 harvest...Kings Boys High School students unpack some of the 2100 cans of food they collected for Octacan, our mid-winter can collection in Dunedin's Octagon.

1926



The 1930s depression and the impact of war were tough for everyone. With community and church support we were able to continue helping people, particularly the growing number of single mothers and abandoned children.

The 'babies' at Grants Braes in 1926.

1936



Some of the Dunedin cottage children leave for a holiday at the Middlemarch cottage in 1939.

VOLUNTEERS AT OUR VERY FOUNDATION

Dozens of 'darning ladies' from various church and community groups volunteered their services at the children's homes.



From the day Presbyterian Social Services Association (PSSA) was founded in September 1906 volunteers have been an intrinsic part of our service.

The first board, then called committee, comprised 16 men – four ministers, two doctors, and 10 businessmen – who volunteered their time and expertise, as do the 11 men and women on our current board.

With just one paid employee, a situation that continued for 10 years, volunteers were called upon to help. That included assisting at our first children's home, established in 1907. There were darning and mending bees, maintenance work, as well as volunteers cleaning and polishing at the home.

Now there are over 600 volunteers throughout Otago contributing thousands of hours each year supporting older people through home visits,

participating in the Buddy Programme, care home visiting, or helping in our charity shops, meals on wheels, and the Family Works foodbank, not to mention causal volunteers who help at events such as Octacan and the Christmas foodbank appeal.

Dunedin volunteers helped us win the coveted 2016 Trustpower Dunedin Community Supreme Award in May, and each year we celebrate volunteers at our own achievement awards in August. This year we acknowledged 13 volunteers for 20 years of service, three for 25 years of service, two for 30 years of service and three volunteers for a remarkable 35 years of service! They are part of a growing group of long term volunteers. How fortunate we are to have such incredibly dedicated supporters.

We thank each and every volunteer for their valued contribution, no matter how large or small. Every assistance contributes to a fairer, more just and caring Otago community. Thank you.



Sewing continues to be undertaken – this time it's sewing name labels on to residents' clothing. With over 28 years of volunteering at St Andrews between them, from left, Judith Wright, Mary Hossack, Annick van Rossem and Leonie Loeber also enjoy the camaraderie the fortnightly sessions provide.

1946



Three residents help a staff member prepare food at Ross Home in 1945.

1956



John Wells and one of the Glendining farm horses take three of the other boys for a sledge ride in 1955.

Marama was bought in Lawrence as a permanent home for some children and a holiday home for Dunedin home children.

Land in Oamaru is donated for Iona in 1944, and in 1954 Iona opens. In Dunedin, St Andrews (original) opens in 1956.



Matron Hilda Shears and Iona resident Mrs Familton, share a laugh in 1960.



Iona resident Tom McNab reads a book to children of the Iona Playgroup.

LIFE GOES ON

People told her that the old women would quarrel together, but 'the experiment had been tried in a small way and this had not been the case. Rather, interest had come into lives that had been wearisome before'.

That was reported in 1907 by Dunedin Presbyterian Deaconess Evelyn Macadam who turned her attention to the plight older citizens once she and fellow Deaconess Mary McQueen, had helped establish our first children's home.

Macadam had observed that it was very hard to find rooms for 'deserving and respectable' old people who at any time might need to find other rooms. However, it wasn't until 1917 that Presbyterian Social Services Association (PSSA) felt it was in a position to revisit the idea of a 'home for the aged'.

Land donated by local businessman John Ross, fundraising by PSSA and the church, plus a 'lower than normal fee' by building contractor James Fletcher, made it possible to lay the foundation stone of Ross Home in March 1918. It was the first PSSA home for the aged in New Zealand and when officially opened on 5 October 1918, welcomed 56

women as its first residents.

Demand for admission to Ross Home quickly grew. Facing some difficulty deciding who would be accepted, the Association applied some very interesting conditions of admission. Applicants were required to include a reference certifying they were of "good character". Family members of the "inmate", as they were then called, were also required to contribute towards the maintenance of the home.

This year, 98 years later, we open our eighth residential aged care home when the doors of Aspiring Enliven Care Centre in Wanaka open on 3 October, and apply very different entry criteria.

Now promoted under Presbyterian Support's national Enliven brand, our homes have 427 residents, increasing to 467 in October. Three retirement villages, several independent living rental cottages and community-based programmes are all contributing to the support of older people in Otago.

Dunedin Television recently produced a 30 minute documentary about life at our Enliven homes. Called 'Life Goes On', this informative short film can be viewed on our website psotago.org.nz/enliven. We have come a long way since those first 56 women took up residence at Ross Home.

1966

Counselling and life education began in 1967 with the opening of the Cameron Centre in Dunedin. This was a joint venture with First Church and the beginning of group programme work. By working with groups, in addition to individual support, we have been able to help a larger number of people, and encourage people to work together, helping each other.

Holmedene, Balclutha opened in 1965 and Ranui, Alexandra opened in 1973.

1984, our name changed to Presbyterian Support Otago.

Matron Betty Macara greets a new resident Mr Allen, assisted by Hilda MacCracken, on the steps of Ross Home in 1969.



1976



Iona resident Percy Hargreaves (right) presented the motor mower to the home in 1975 so that gardener Len Sutton would have a easier ride.

IMMEDIATE SUCCESS AND IT'S NEVER STOPPED

You know you're on the right track when eight months after opening, your shelves are bulging and customers are beating a path to your door.

That was the case for our first opportunity shop that opened at 59 St Andrew St, Dunedin, in February 1972. By October the premises next door were added to the business, and later an archway was cut through to connect the two. We have been there ever since.

Today op shops are trendy, but back in the 1970s there was a shame attached to needing second-hand clothing. Curtains had to be hung over shop windows to protect the privacy of shoppers.

Donations of clothing and other goods were organised by Dunedin Presbyterian parishioners, some of whom became volunteers. The only staff member was manager Mary Williamson, wife of the Caversham Presbyterian Minister.

Two of the many volunteers who worked in our first op shop.



Lorraine Brown, right, has been a 'Tuesday morning lady' at The OpShop on St Andrew for over 12 years. Under the management of Chrissy Anderson, left, the shop has developed a wide clientèle from students and young parents to savvy shoppers looking for leading labels at affordable prices. Cruise ship passengers have also 'found' the shop for warm on-shore jackets and knitwear to Kiwiana to take home.

Two years after opening, the shop had a turnover of \$20,000, making a welcome contribution to association funds.

Today we have three charity shops, each with eye-catching, creative window displays and 'personalities' that reflect their differing clientèle.

The original OpShop on St Andrew, Shop on Carroll in Dunedin, and Shop on Taieri in Mosgiel now have 10 part-time staff members between them. They are well supported by a volunteer base of over 80 people to help share the load. Volunteers bring a lot of talent and joy to the three shops, and keep our customers coming back time and time again! Their contribution is invaluable, as is that of all our wonderful clothing donors. If you would like to make a donation of quality, clean clothing or household items to our charity shops, you can drop them off at 10 Carroll Street, Dunedin or call 03 477 7115 for a pick-up (large deliveries).

1986



The 1990s heralded major changes for Presbyterian Support. Changes in Government policy in the area of pre-adolescent care led to the closure of the Glendining child care complex – the end of an historic era but the beginning of a new focus in preventative work with children.

The Buddy Programme began to play an important part in our community family services.

Volunteer Isobel van Royen entertains residents at St Andrews in the mid-1980s.

1996



Iona resident Archie Keith and Iona play group members enjoy a tour of the Oamaru Fire Station in 1997.

YOUR DONATION MAKES A DIFFERENCE

The opening statement of the First Annual Report of the Presbyterian Social Service Association (now Presbyterian Support Otago), for the year ending September 30, 1907 reads:

It is with great gratitude to God that we place the following report of the first year's operations of the P.S.S.A. before its friends and sympathisers. The work has in many respects been difficult. Many of the disappointments known so well to all who engage in similar work have been experienced, but on the other hand there has been much to encourage us. Many who have been assisted during the year gratefully acknowledge that help rendered, and their lives also testify that the assistance has not been given in vain. In a letter, received only a few days ago, a lad of 19, referring to the past, writes: - "I will never forget the first day I was spoken to and another chance offered me. I think over it all when I am working, and what a difference it all has made to me."

110 years later, with your help, we are still making a difference. Thank you for your ongoing support.

2006

2016

In 2001 the YouthGrow youth development programme started in North East Valley providing life and work skills for adolescents. YouthGrow, along with welfare services, community social workers, personal and public advocacy, the Buddy programme, counselling and group work are all now part of the nationally branded Family Works.

Today Presbyterian Support Otago looks forward to new expressions of care in our community.



To Mr Andrew Borthwick, Finance Director
Presbyterian Support Otago

I BEG to enclose herewith my (enter amount)

\$..... donation towards the funds of
Presbyterian Support Otago to support:

☐ Family Works social services for children
and families in need

☐ Enliven services for older people

I WISH to make my donation by:

☐ cheque ☐ credit card

Card number **VISA** ☐ **MasterCard** ☐

--	--	--	--	--	--	--	--	--	--	--	--	--	--	--	--

Name on card

Expiry date

Please credit the above as a contribution from:

Name

Address

.....

Phone

Email

To make a donation via internet banking, please
use PSO Account Number: 06 0901 0005597 00.
Please use the reference "donation"

☐ I HAVE left a gift to PSO in my Will

☐ I WOULD like more information about
leaving a gift in my Will

Please return this form to:
Fundraising Team
Presbyterian Support Otago
FREEPOST 845
PO Box 374,
Dunedin 9054

(All donations are receipted. Gifts over \$5.00 are tax
deductible. Charities Commission Number CC 20878)

Signature



Be a little bit good

For just a \$1 a day be a Family Works
Guardian Angel and give lasting help to
Otago's children and families in need.
Start today at...

psotago.org.nz



Presbyterian
Support Otago
110
years
people helping
people

Presbyterian
Support Otago
407 Moray Place
PO Box 374,
Dunedin 9054

t: 03 477 7115
e: enquiries@psotago.org.nz
w: psotago.org.nz
f Presbyterian Support Otago
v PSOtago

Our Services

enliven

