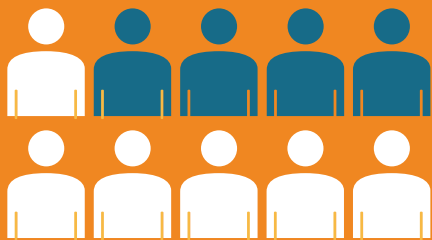


Kai for Octacan



60%

accessing our
foodbank are families



1,200

Food parcels given out this year
(January - May 2021)

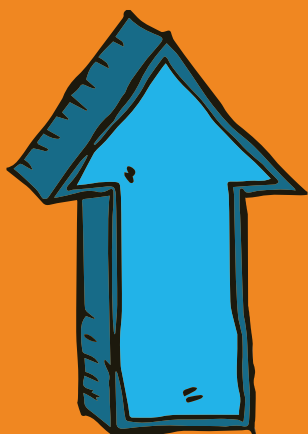
That's about

46,000

food
items!



35%



increase in
families &
individuals
returning for
foodbank
assistance
within 12
months



Increase in demand for
financial mentoring

to assist with electricity fund
applications, check benefit entitlements
and advice about planning a budget



Presbyterian Support
Otago



Family
Works